

TECHNICAL SHEET

Dual purpose millet varieties - Souna Saloum, Souna Sine and Souna Baol

Presentation of the millet

Millet (*Pennisetum glaucum*) also known as millet is a food grain, with very small seeds, grown in dry regions especially in Africa and Asia. Millet is an annual herbaceous plant of the grass family (Terra Millet, 2016). It is the most widely cultivated (gnis, 2011). Millet is primarily a food crop and is therefore used for human consumption. This grain is a great source of protein, phosphorus, and vitamins B1, B2, A, and C (gnis, 2011). There are several different species: Proso millet, round millet, long millet, bunch millet, bird millet, broom millet, pearl millet (gnis, 2011). The most widely grown millet is pearl millet (*Pennisetum glaucum*) and accounts for half of the world's millet production (gnis, 2011).

Millet was widely grown in our country in the early 19th century. It is: a gluten-free plant; suitable for extensive conditions; allows to unload rotations with many cereals; drought resistant, suitable for dry regions; temperature demanding (C4 plant); vegetation period: 90 - 110 days; low growing: plants up to 1 m high; soil type : light to medium-heavy (does not tolerate heavy soils); does not tolerate soil compaction; does not tolerate areas with stagnant water and hydromorphic layers (horizontal root network); sensitive to cold spells (do not plant in areas with risk of late frosts); yield 20 - 40 dt / ha; amount of grain in panicle is determined at 3-5 leaves (agridea, 2008).

Millet seed

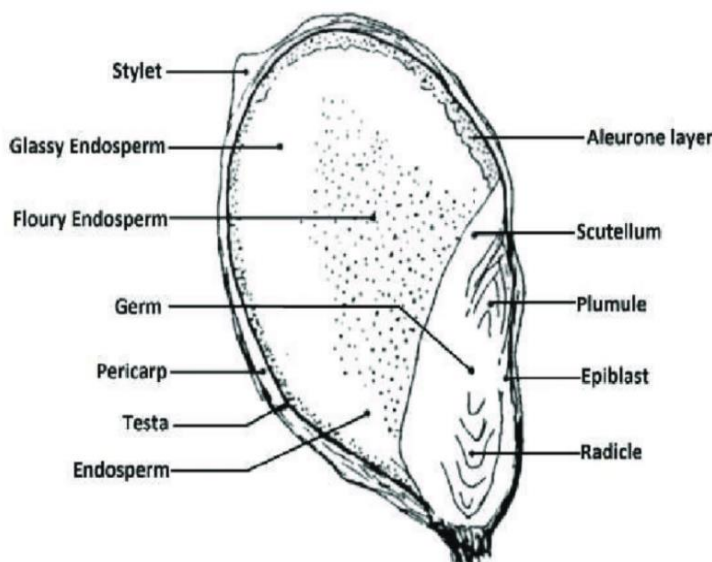


Figure 1 : Cutting of a millet seed (source : Rao and *al*, 2017)

Sowing and development of millet

Sowing is done from May 15 to early June, depending on the region. (In 2015 some sowed after June 20 with success) (Terra Millet, 2016). Important: wait until the soil is well warmed up. 12 degrees minimum (Terra Millet, 2016). Its growing season (100 days) is much shorter than corn (Terra Millet, 2016). Millet is generally harvested between mid-September and early Oct (Terra Millet, 2016). Beware a little moisture is needed for good emergence (moisture already there or coming soon) otherwise yield will be lower, weeds will compete (Terra Millet, 2016).

Characteristics of the technology

Yield potential of 2.5 t ha⁻¹ ; Stay Green character ; Medium to short cycle - 105 days for Souna Saloum, 92 days for Souna Sine and 87 days for Souna du Baol.

Références bibliographiques

Agridea (2008) : Millet – Culture ; fiche de renseignement ; 2p.

Gnis (2011) : Cultivons la diversité des plantes cultivées / Millet ; carte d'identité ; 2p.

RAO B., KANDLAKUNTA B., G. D. A. C., GOLLA S. D., TONAPI V. (2017): Nutritional and Health Benefits of Millets; 105p.

Terra Millet (2016) : Le millet : fiche technique 2016 ; 15p.

Web sites consulted

<https://www.terramillet.com/dans-les-champs-terra-millet/cultiver-les-millets/fiche-technique-de-production-des-millets/> ; 11/08/2021 at 10h10

https://www.researchgate.net/figure/General-structure-of-millet-grain_fig1_318921493 ; 11/08/2021 at 10h30

[https://fr.wikipedia.org/wiki/Millet_\(gramin%C3%A9e\)](https://fr.wikipedia.org/wiki/Millet_(gramin%C3%A9e)) ; 11/08/2021 at 10h41

https://www.bioactualites.ch/fileadmin/documents/bafr/production-vegetale/grandes-cultures/4.14.1-2_Millet.pdf ; 11/08/2021 at 10h58

<https://www.semencemag.fr/ouverturepdf.php?file=cultiver-jardinier-millet-1448635847.pdf> ; 11/08/2021 at 11h25

Other references

Regional Center of Excellency on Dry Cereals and Associated Crops ; HOST INSTITUTION: CENTRE D'ETUDES RÉGIONAL POUR L'AMÉLIORATION DE L'ADAPTATION À LA SECHERESSE (CERAAS) ; Host country: Senegal; Coordinator: Ndjido KANE; Email: ndjido.Kane@isra.sn; ndjido.Kane@isra.sn; Telephone: +221 777232019 / +221 339514693